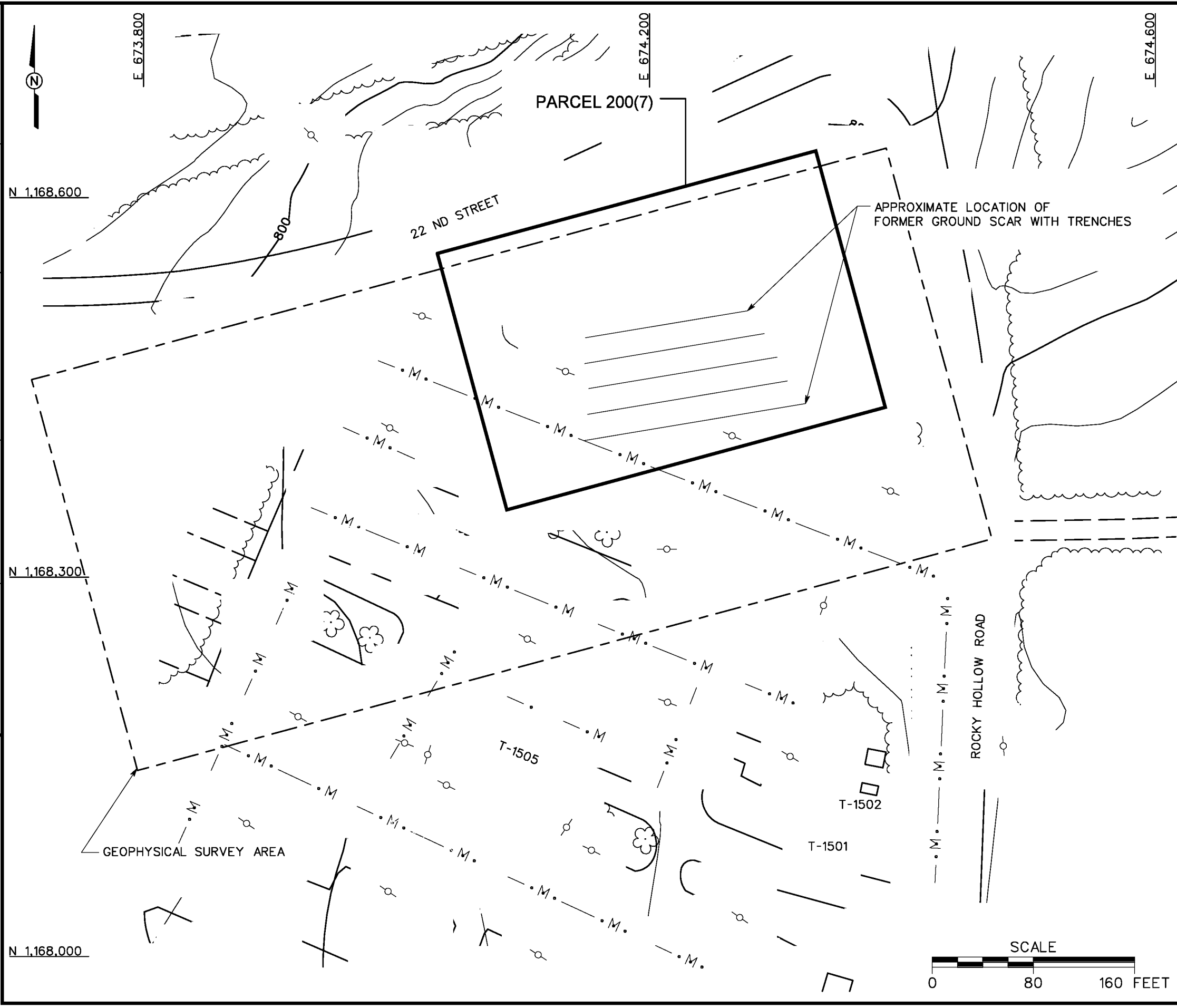


DBILLING
c:\cadd\design\774645es.416
03/27/01 10:31:53 AM
STARTING DATE: 11/22/99
DRAWN BY: D. BILLINGSLEY
DATE LAST REV.:
ENGR. CHK. BY: M. MAKI
DRAFT. CHK. BY:
INITIATOR: M. MAKI
DWG. NO.: ...774645es.416
PROJ. MGR.: J. YACOB
PROJ. NO.: 774645



LEGEND

- UNIMPROVED ROADS AND PARKING
- PAVED ROADS AND PARKING
- BUILDING
- TOPOGRAPHIC CONTOURS
- TREES / TREELINE
- PARCEL BOUNDARY
- GEOPHYSICAL SURVEY AREA
- FENCE
- UTILITY POLE

FIGURE 3-1
SITE MAP
EXTENT OF GEOPHYSICAL SURVEY AREA
GROUND SCAR WITH TRENCHES
PARCEL 200(7)

U. S. ARMY CORPS OF ENGINEERS
MOBILE DISTRICT
FORT McCLELLAN
CALHOUN COUNTY, ALABAMA
Contract No. DACA21-96-D-0018

IT **IT CORPORATION**
A Member of The IT Group